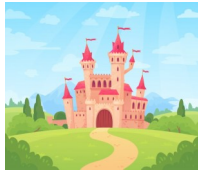
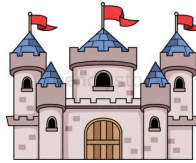




Year 1 & 2
Summer 1 – 2021



Castles

As Writers we will:

Build on our prior knowledge of non-chronological reports and use the features to research and write about castles and their defences. We will continue developing our narrative writing skills, with a focus on story endings, including changing the ending to the well-known fairy-tale, Sleeping Beauty! We will also continue growing our knowledge of different types of poetry and writing castle themed poems!

As Mathematicians we will:

In Year 1 we will be consolidating our knowledge of place value, addition & subtraction as well as learning new skills with multiplication and division. In Year 2, we will consolidate our work on fractions, how to use the inverse operations and expand our knowledge of measurement, by learning how to tell the time to the nearest 5 minutes.

As Readers we will:

Look at a variety of fiction and non-fiction castle themed texts. This will include stories, fairy-tales and information texts. We will learn how to pick out key facts from an information text, as well as retell the stories and think about how the different characters are feeling throughout these.

As Scientists we will:

Build on our previous two half term's knowledge of seasonal changes and focus on the weather. We will be identifying different forms of weather, observing the changes and will be able to describe different weather types associated with the seasons. We will also look at how the length of day varies throughout the seasons and begin using our knowledge of what we learn in Maths to present this data onto charts.

As Historians we will:

Investigate what the purpose of castles were and what each feature of the castles were made for. We will look at key individuals, including William the Conqueror (FUN FACT—he is in Miss Dean's family tree!) We will also look at some of the royal castles located in the United Kingdom and compare them.

As Designers we will:

Use all of our knowledge that we have learned during English and Guided Reading lessons about the features of castles to design, sketch and create a castle. We will be using a variety of materials to create these and learn techniques to make the different sections of a castle.

Welcome back - we hope you had a good break. This half term we may repeat some of the learning that occurred over the lockdown to ensure that the children are secure within their knowledge and skills. Just to remind you that PE days may move throughout the week so therefore please make sure your child has their kit in school from Monday to Friday. All children will have weekly Spellings, Reading and Maths homework as well as the 'Pick n Mix' sheet - which is to be completed online where possible.